

Entering Grades Using the Student Management Module

The Student Management Module is accessed from the Manager environment, by selecting "Student Management" from the "Operations" dropdown menu. Figure 1 is the index screen for

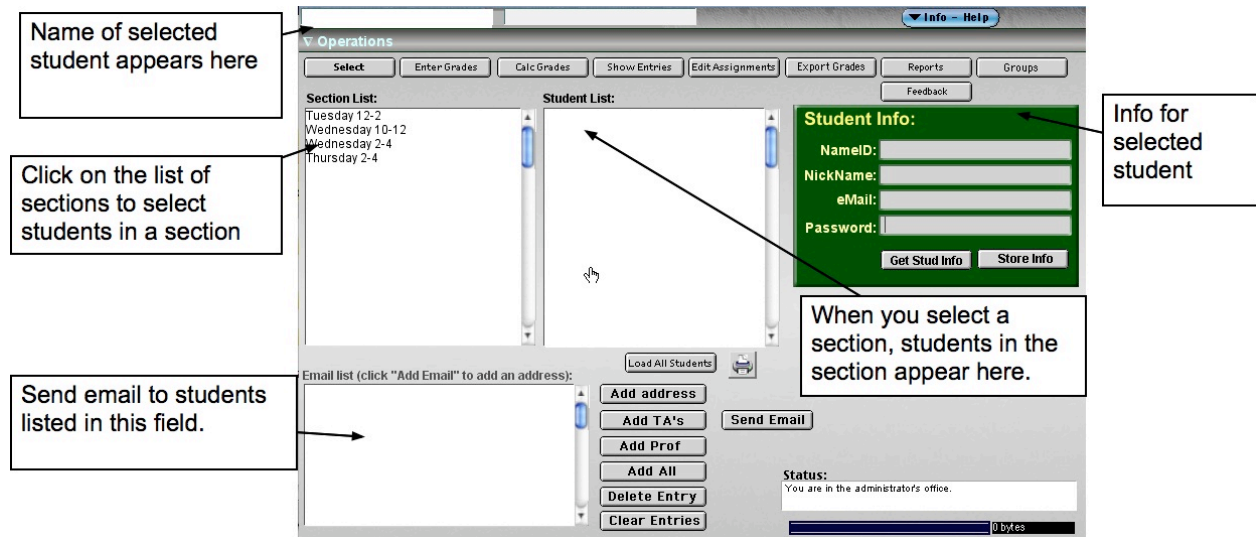


Figure 1. Index to Student Management module (@Manager: ▾Operations ▾Student Management). You can enter grades for an entire class, by section, or for individual students. You can also select students or groups of students to send emails to, and get student email and password information.

this module (@Manager: ▾Operations ▾Student Management).

Figure 2 shows the screen for grade entry. Each of the entry options is self-explanatory, if you read the information panel on the right side of the screen. You can enter grades by individual, section, or whole class. Also, bar code grade entry is supported.

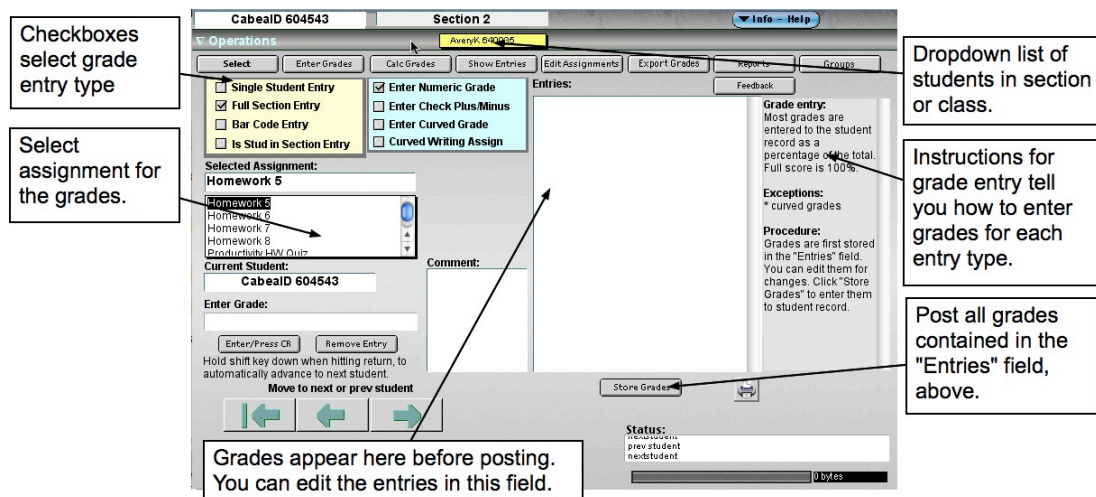


Figure 2. Grade entry screen. Use the information field at the right side of the screen to figure out how to use it.

Managing Calibrated Peer Review Grades

EarthEd has a strong system for managing the calibrated peer review process. A variety of reports are available to help the teacher choose which papers should be graded separately, and in setting the grade cutoff points.

To access the reports screen, log on to the system as a teacher and choose to enter the class. Then, select and launch the desired writing assignment at the assignments index screen. Figure 3 shows the dropdown menu options that you will use to access the Reports screens.

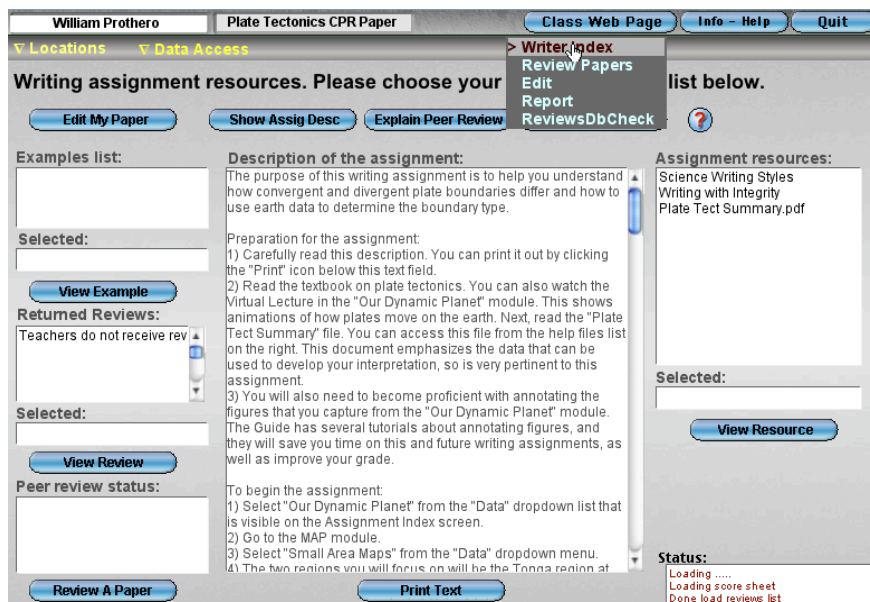


Figure 3. Writer index screen with the "Assignment" dropdown menu options showing. The Report option is what is needed for this activity.

Choose the "Report" option. Figure 4 shows the report choices. Figure 5 shows the reports screen as it first appears. Each student who handed in a paper is listed. You can show all students, those who have done no calibration papers, those who have received no reviews, received one review, who have reviews no peers, who have not done their own review. The "Show Sel Studnt Rsrces" option displays the handin times of the calibration and peer review activities. The "Show Sel Studnt Report" displays the report that the student will see when she/he finishes the assignment. It is also possible to list students by section.

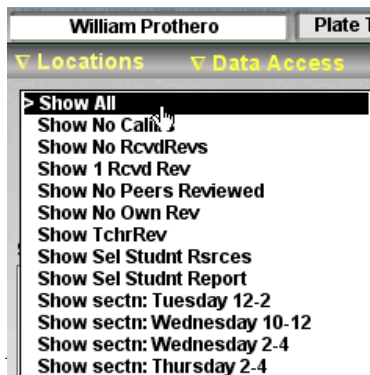


Figure 4. Report choices.

The detailed listing for a student shows how the student scored the calibration papers. Figure 4 shows the listing for a student, and its entries are used for the examples that follow.

Calib Scores: the listing (32 – 33)/42 means that the student gave 32 points when the correct value is 33, out of a total of 42.

RMS calib item diffs: a measure of how far the student is from the individual item scores. A student could get a perfect score in Calib Scores, but still have a high deviation from the individual item scores.

Peer review scores, reviewer, weight: The 3 peer reviewer scores are listed. The Rev1 entry indicates that the reviewer assigned a score of 20 out of 42, by student "QuinnH 637819" with a relative weight of 7.26. The other two reviewers had relative weights of 0.13 and 0.45. This means that the first reviewer's score dominated the peer grade result. The weights are determined by how close the reviewer came to the "correct" calibration item scores, so the first reviewer was

William Prothero Plate Tectonics CPR Paper Class Web Page Info - Help Quit

▼ Locations ▼ Data Access ▼ Assignment Assign Grades

▼ reportChoice All students are listed.

Selected student: AndersonJ 712180

▼ myName

Student's assignment info:

Calib differences:
 Overall scores: (your score first, teacher's Second)
 Calib1: (36 - 42)/42 Late: 0.0 hrs
 Calib2: (32 - 33)/42 Late: 0.0 hrs
 Calib3: (13 - 10)/42 Late: 0.0 hrs

RMS calib item diffs:
 Calib1: 0.3
 Calib2: 0.5
 Calib3: 0.5

Peer review scores, reviewer, weight
 Rev1: 20/42, QuinnH 637819, 7.26
 Rev2: 20/42, ChangA 557667, 0.13
 Rev3: 24/42, GomezM 733004, 0.45
 Weighted peer pts: 20/42

Own paper score: 28/42
 Late: 261.6 hrs

Scores given peers, quality (1.0=max):
 Peer1: 20/42, NolteB 643932, 0.98
 Peer2: 35/42, NolteB 643932, 0.79
 Peer3: 35/42, ChangA 557667, 0.50

Assignment score:
 Raw: 48%, Curved: 58%, Final: 58%
 Review activities grade: 78%, Final: 73%

Status:
 Loading ...
 Loading score sheet
 Done load reviews list

Figure 5. Report screen for a cpr assignment. The "Assign Grades" button takes you to the second report screen. apparently much more careful in doing the reviews.

Teacher score: This score is displayed for papers graded by a teacher.

Own paper scores: This is the score that the student gave his/her own paper.

Late: hours that the paper is handed in late.

Scores given peers: The figure on the left shows the part of the display that must be scrolled to be visible. The quality score is 1 when the score matches the final grade the peer got, and is smaller as the deviation from the peer's final grade is larger. The computation of the "Quality" score reminds students that they are accountable for the quality of their peer grading.

Assigning Grades for CPR Writing Assignments

To assign grades, click the "Assign Grades" button on the reports screen (figure 5). Figure 6 shows the grade assignment screen.

The screenshot shows the 'Grade Assignment' screen for a class named 'Plate Tectonics CPR Paper'. The interface includes a top navigation bar with 'Class Web Page', 'Info - Help', and 'Quit'. Below this, there are tabs for 'Locations', 'Data Access', and 'Assignment'. The 'Assignment' tab is active, showing a 'Go To Reports' button. The main area is divided into several sections: 'Select Student' (with a dropdown menu showing 'AnB_720973'), 'Student's assignment info' (showing 'Showing: all scores'), 'Results' (a table of student scores), 'Assignment item weights' (a table of weights for different items), and 'Grade Cutoffs' (a table of cutoffs). On the right side, there are five callout boxes with arrows pointing to specific elements: 'Choice of reports' points to the 'Go To Reports' button; 'Post grades' points to the 'Post All Stud Grades' button; 'Post grade for selected student only' points to the 'Post Sel Stud Grade' button; 'Weighting parameters for computing raw assignment grades' points to the 'Assignment item weights' table; and 'Raw score grade breakpoints' points to the 'Grade Cutoffs' table. A sixth callout box, 'Clicking a line selects a student', points to a line in the 'Results' table.

Figure 6. This is the grade assignment screen. The assignment weights and grade cutoffs are stored in the class file and are unique for each assignment. For a new class, the weights and cutoffs are set to default values.

Note: All paper grade items are stored as percentage of a maximum. So, when you assign points (figure 6) to various items, it doesn't matter what values you use. Only a percentage of the maximum of the maximum score is posted as a grade. So, pick a number that is easy to work with.

The screenshot shows the 'Report Choices' menu in the grade assignment screen. The menu is open, showing a list of options: '> Calc: All Scores', 'Plot Raw Score Distrib', 'Plot Curved Score Distrib', 'Curve Scores', 'Save Weights', 'Load Weights', 'Save Grade Cutoffs', 'Load Grade Cutoffs', 'Plot Own/Peer Grade Diff', 'Plot Teacher/Peer Grade Diff', 'Plot Calib1 errors', 'Plot Calib2 errors', and 'Plot Calib3 errors'. The background shows the same interface as Figure 6, but the 'Results' table is partially obscured by the menu. On the right side, there is a callout box with a text description of the report choices.

Figure 7. A list of report choices. The choices provide a range of useful information. You can plot raw and curved score distributions, Distributions of differences between peer and student assigned grade, difference between teacher and peer assigned grade, distribution of rms calibration paper errors, and save and load the scoring weights and grade cutoffs. These weights are loaded automatically when the reports screen initializes, but should be saved and reloaded when changes are made.

Easy email message access: The "Locations" menu has an "Email" option that will bring up a window with a dropdown list of all students, in the event that you want to send a message to a particular student. This can be convenient if you want to ask a student a question or send a comment about her/his assignment.

Reports for Writing Assignments Graded by the Teacher(s)

You may want to give a simple writing assigned that is handed in and grade by the teacher. The Student Management Module needs to be used to enter grades for these papers.